

80 West Nyack Road

±5 Acre Industrial Outdoor Storage

80 West Nyack Road
Nanuet, NY 10954

32 Door Truck Terminal + Maintenance Garage



Property Details

±9,738 SF Truck Terminal

+ ±8,491 SF warehouse

+ ±1,247 SF office

+ 32 (9' x 9') dock doors

±4,250 SF Maintenance Garage

+ ±1,768 SF warehouse

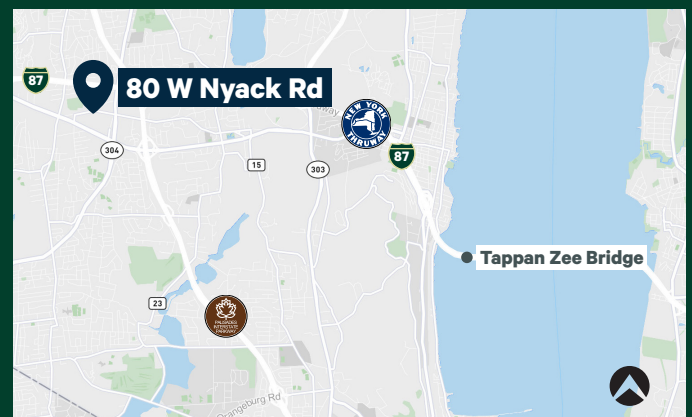
+ ±1,524 SF office

+ 958 SF garage

+ 12 (9' x 9') dock doors

+ 2 (10' x 12') drive-in doors

80westnyackroad.com



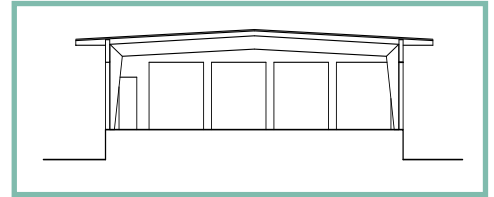
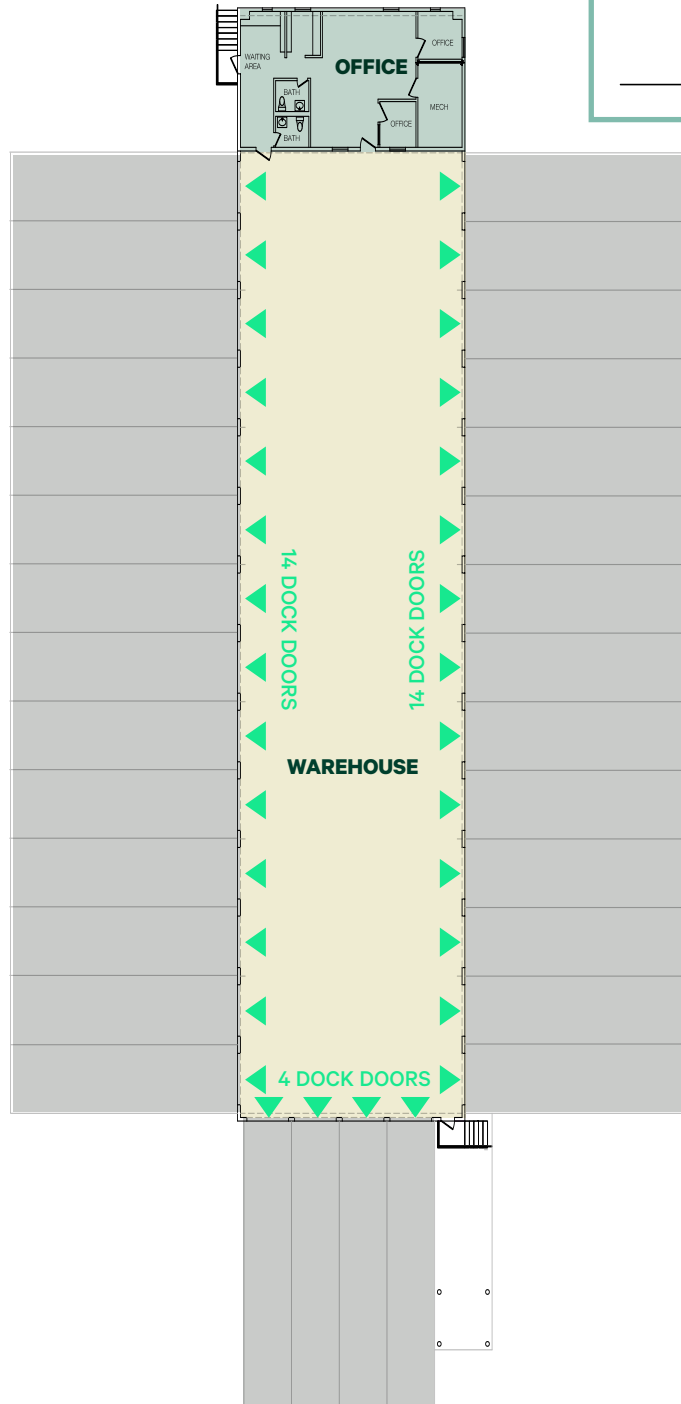
Floor Plan | Truck Terminal

±9,738 SF

±8,491 SF WAREHOUSE

±1,247 SF OFFICE

32 DOCK DOORS



Floor Plan | Maintenance Garage

±4,250 SF

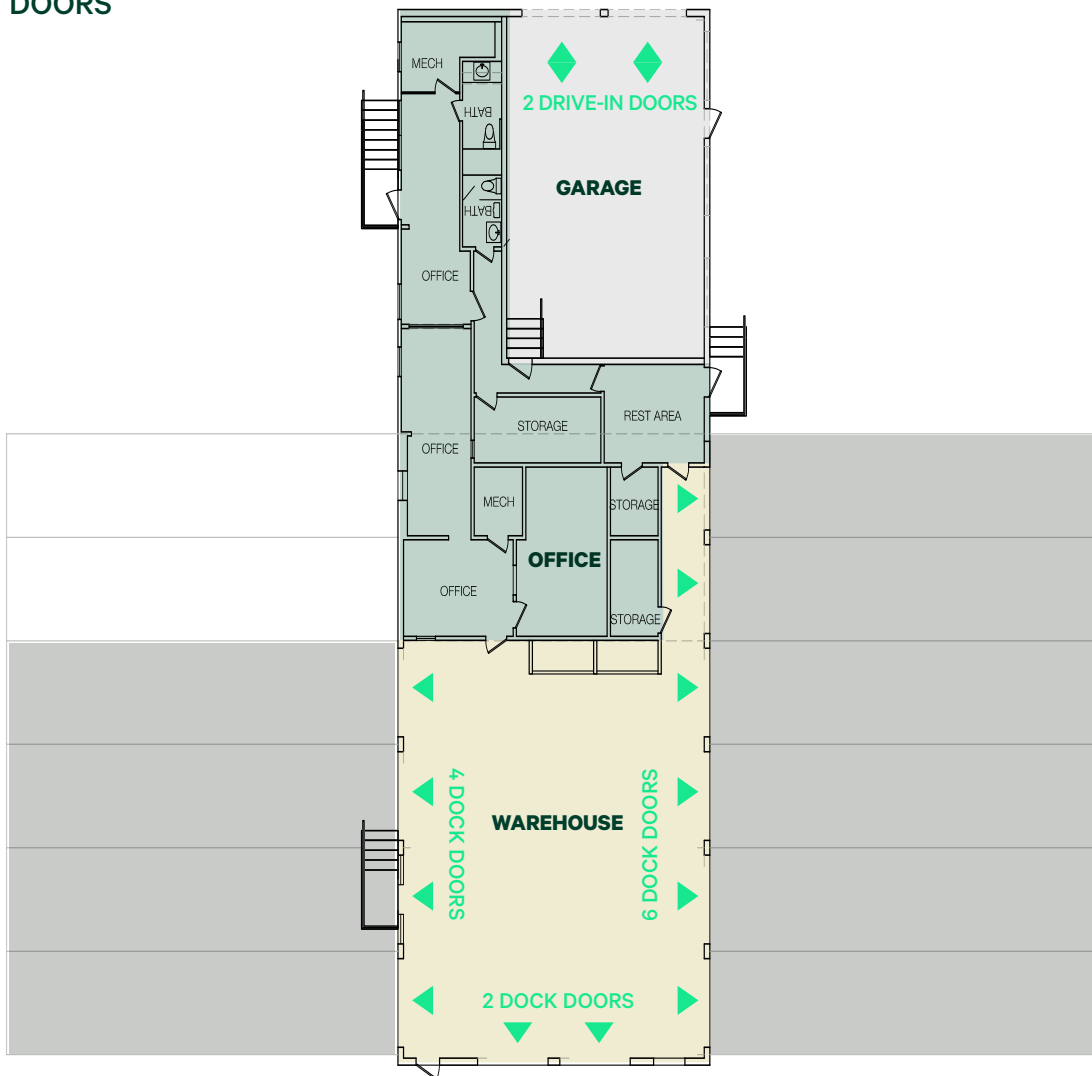
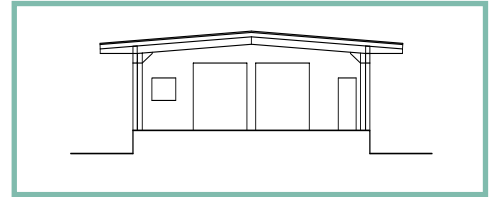
±1,768 SF WAREHOUSE

±1,524 SF OFFICE

±958 SF GARAGE

12 DOCK DOORS

2 DRIVE-IN DOORS

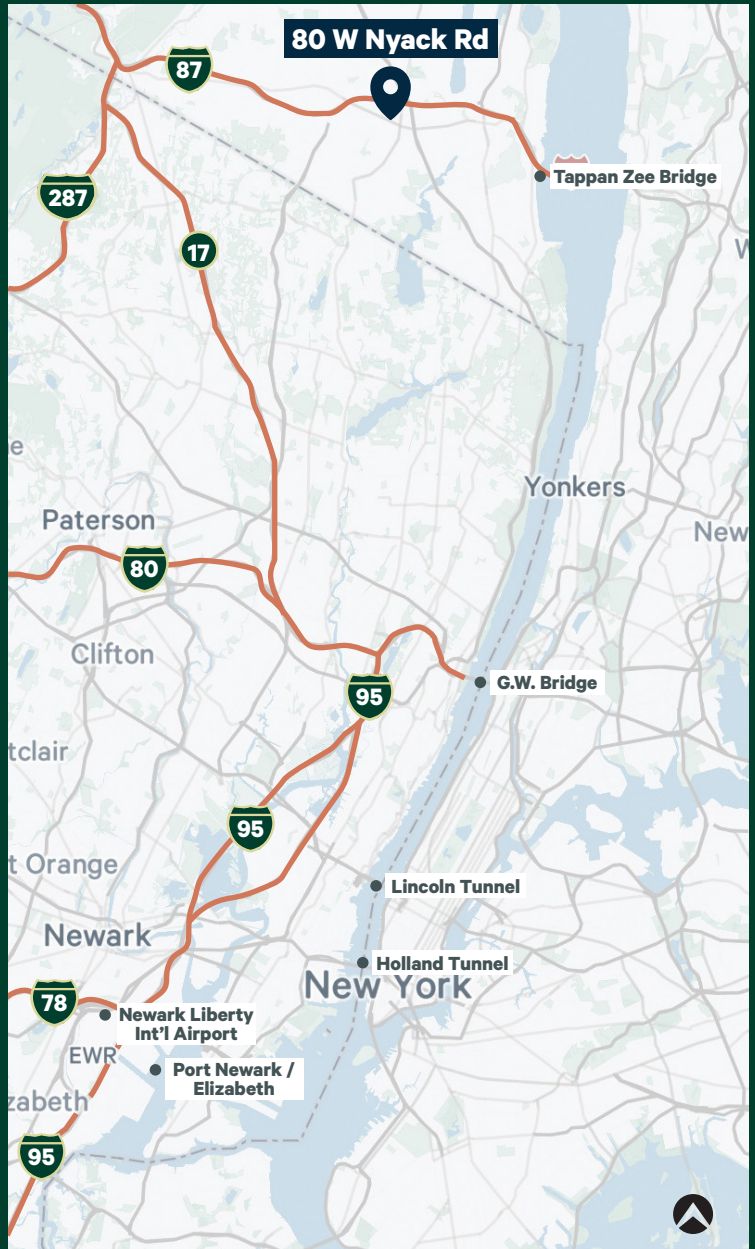


Location Advantages

Direct Access to the Tri-State Area & New York City

KEY DISTANCES

NEW YORK STATE THRUWAY / I-287	4 MINUTES / 1.3 MILES
ROUTE 303	6 MINUTES / 3.4 MILES
TAPPAN ZEE BRIDGE	9 MINUTES / 6.8 MILES
GEORGE WASHINGTON BRIDGE	22 MINUTES / 19.8 MILES
LINCOLN TUNNEL	38 MINUTES / 32 MILES
NEWARK LIBERTY INT'L AIRPORT	45 MINUTES / 39 MILES
HOLLAND TUNNEL	46 MINUTES / 35 MILES
NEW YORK CITY	46 MINUTES / 34 MILES
PORTS NEWARK / ELIZABETH	51 MINUTES / 42 MILES



Contact Us

Thomas F. Monahan

Vice Chairman
+1 201 712 5610
thomas.monahn@cbre.com

Larry Schifffenhaus

Executive Vice President
+1 201 712 5809
larry.schifffenhaus@cbre.com

Brian Golden

Executive Vice President
+1 201 712 5607
brian.golden@cbre.com



© 2024 CBRE, Inc. All rights reserved. This information has been obtained from sources believed reliable, but has not been verified for accuracy or completeness. You should conduct a careful, independent investigation of the property and verify all information. Any reliance on this information is solely at your own risk. CBRE and the CBRE logo are service marks of CBRE, Inc. All other marks displayed on this document are the property of their respective owners, and the use of such logos does not imply any affiliation with or endorsement of CBRE. Photos herein are the property of their respective owners. Use of these images without the express written consent of the owner is prohibited.