

# FOR LEASE

## 2110 Plainfield Pike

Cranston, RI



## FOR LEASE

### **+27,850 SF TOTAL TERMINAL SPACE**

### **±7.75 Acres of Land / 52 Door Docks**

#### Specifications

- +-22,650 SF TERMINAL SPACE (1)
- +-5,200 SF MAINTENANCE SHOP (2)
- SET ON 7.75 ACRES OF LAND
- 3 SHOP BAYS
- 52 DOCK HIGH DOORS
- EASY ACCESS FROM I-295, I-95
- POWER TO SITE
- UTILITIES: MUNICIPAL WATER & SEWER
  - NATIONAL GRID, GAS & ELECTRIC

#### Scheduled Improvements

##### PLANNED FOR TERMINAL & SHOP:

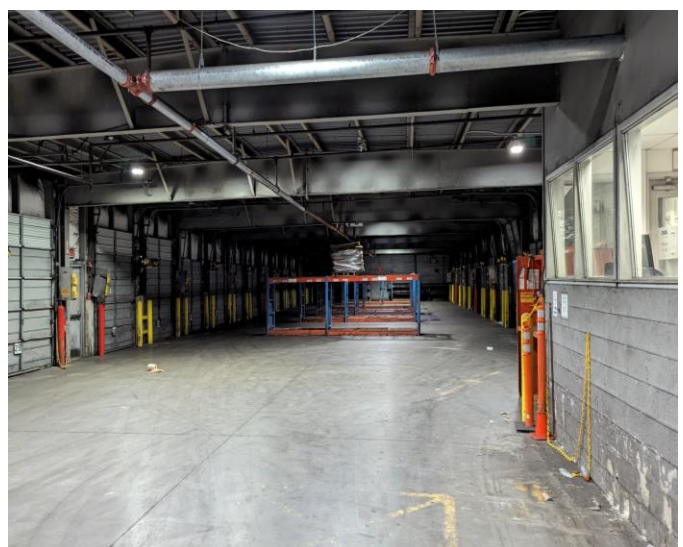
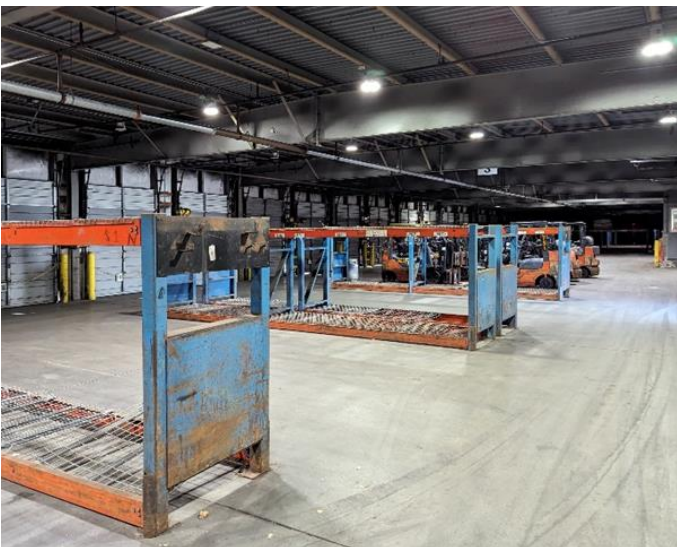
- PAVING REPAIRS
- OFFICE RENOVATIONS
- LED LIGHTING UPGRADES
- DOOR & LEVELER SERVICING & REPAIRS

**Contact:** **Jeff Finan**  
**Partner**  
**Hayes & Sherry**  
401.273.7428  
jfinan@hayessherry.com

**Laurence Casey**  
**Executive Managing Director**  
**Cushman & Wakefield**  
732.243.3103  
Larry.casey@cushwake.com

## REALTERM

146 Westminster Street, 2<sup>nd</sup> floor  
Providence, RI 02903  
phone: 401.273.1980  
hayessherry.com



# FOR LEASE

## 2110 Plainfield Pike

Cranston, RI

### DRIVE-TIMES & MILEAGE

**8** MILES  
20 MINUTES TO PROVIDENCE

**52** MILES  
55 MINUTES TO BOSTON

**180** MILES  
3 HOURS TO NYC

